

Continuing Medical Education



PITUITARY UPDATE 2014

A CME/CEU-CERTIFIED COURSE

FRIDAY, MAY 9, 2014

Registration | 7:30 AM

Scientific Program | 8:00 AM – 3:30 PM



**Smilow Center for Translational Research
Perelman School of Medicine
University of Pennsylvania
3400 Civic Center Boulevard
Philadelphia, PA**

COURSE DIRECTORS

Peter J. Snyder, MD

M. Sean Grady, MD

Julia Kharlip, MD

In Conjunction with
Hospital of the University of Pennsylvania
Department of Nursing Education,
Innovation and Professional Development



Program Overview & Target Audience

This course will present the newest approaches and techniques in the diagnosis and treatment of pituitary adenomas, including acromegaly and Cushing's disease. Diagnosis and treatment will be covered from the interdisciplinary perspective of endocrinology, radiology, neuro-ophthalmology, neurosurgery, and radiation oncology. The approach will be both didactic and interactive, and will include lectures, question and answer features, and a panel discussion.

This conference has been designed for endocrinologists, neurosurgeons, ophthalmologists, general radiologists, radiation oncologists, primary care physicians, nurse practitioners, residents and fellows.

Learning Objectives:

Upon completion of this activity, participants should be able to:

- Evaluate a sellar mass to determine if it is a pituitary adenoma or other lesion
- Discuss the value and limits of MRI in evaluating a sellar mass
- Explain the potential and limits of endoscopic transsphenoidal surgery for pituitary adenomas
- Describe the different types of radiation, including linear accelerator (IMRT, Cyberknife), gamma radiation (Gamma Knife) and proton beam
- Treat, medically, patients who have acromegaly and Cushing's disease

Hosting Department and Organization

Pituitary Update 2014 is hosted by the Department of Neurosurgery and the Department of Medicine, Division of Endocrinology, Perelman School of Medicine at the University of Pennsylvania.

Accreditation

Physicians: The Perelman School of Medicine at the University of Pennsylvania is accredited by the Accreditation Council for Continuing Medical Education (ACCME) to provide continuing medical education for physicians.

Nurses: The Hospital of the University of Pennsylvania, Department of Nursing Education, Innovation and Professional Development is an approved provider of continuing nursing education by the PA State Nurses Association, an accredited approver by the American Nurses Credentialing Center's Commission on Accreditation.

Designation of Credit

Physicians: The Perelman School of Medicine at the University of Pennsylvania designates this live activity for a maximum of 6.25 *AMA PRA Category 1 Credits*[™]. Physicians should claim only the credit commensurate with the extent of their participation in the activity.

Nurses: The Hospital of the University of Pennsylvania, Department of Nursing Education, Innovation and Professional Development awards this activity 6.0 contact hours.

Certificates and Transcripts: A few days prior to the symposium, pre-registered participants will receive an email containing directions, additional symposium information and a link to the symposium pre-test, which is an anonymous, short questionnaire that will be used to gauge participant knowledge. After the symposium has concluded, all participants will receive a follow-up email containing a link to the post-test, symposium evaluation and request for credit (please note that certificates are not automatically issued). Once participants submit the request for credit, the credit can be viewed on a transcript by logging onto www.penncmeeonline.com two weeks after the symposium. Additionally, a certificate will be mailed via the US postal service 4-6 weeks after the symposium has concluded.

Disclosures

The Perelman School of Medicine at the University of Pennsylvania, Office of Continuing Medical Education, adheres to the ACCME *Standards for Commercial Support*. Faculty disclosure information will be made available in the conference materials and syllabi. Faculty members are also expected to disclose to participants any discussions of off-label and/or investigational uses of pharmaceutical products within their presentations.

Registration Fee

The registration fees for *Pituitary Update 2014* are the following: \$100 for Physicians and Industry Representative, \$75 for Nurses and Health Care Professionals and \$25 for Residents, and Fellows. The registration fees are waived for Penn Medicine employees, faculty and staff as long as registrant has a valid Penn Medicine ID (required).

The registration fee includes attendance to the symposium, a course booklet and a link to view the presentations online, continental breakfast and mid-morning and afternoon break as well as lunch.

You may register online for the course by visiting www.penncmeeonline.com, clicking on CME Activities and then Live Activities. You may also mail or fax your completed registration form and payment. Please see the top of the registration form for mailing and faxing information. All registrations will be confirmed in writing if your registration form and fee are received by April 25, 2014.

Cancellation and Refund Policy

In order to process refunds for course withdrawals, cancellations must be received in writing by April 25, 2014 and are subject to a service charge equivalent to 10% of the registration fee.

No refunds will be issued thereafter.

The University reserves the right to cancel or postpone this course due to unforeseen circumstances. In the event of a cancellation or postponement, the University will refund registration fees but is not responsible for related costs or expenses to participants, including cancellation fees assessed by hotels, airlines, and travel agencies.

Meeting Location

Pituitary Update 2014 will be held Friday, May 9, 2014 in the Smilow Center for Translational Research, Perelman School of Medicine at the University of Pennsylvania, 3400 Civic Center Boulevard, Philadelphia, Pennsylvania, 19104.

For those driving to the conference, the following garages are within 1-2 blocks of the Smilow Center for Translational Research. Parking fees are not included or validated and availability and pricing is subject to availability.

Penn Lot #8 – Garage Next to the Penn Museum of Anthropology and Archeology)
34th and Spruce Streets, University of Pennsylvania Campus
Approximate Cost Per Day: \$20.00

Penn Tower Garage
34th Street and Convention Center Drive
University of Pennsylvania Campus
Approximate Cost Per Day: \$15.00

If you require an overnight room, we suggest the following area hotels. Please note that no special room rates have been arranged.

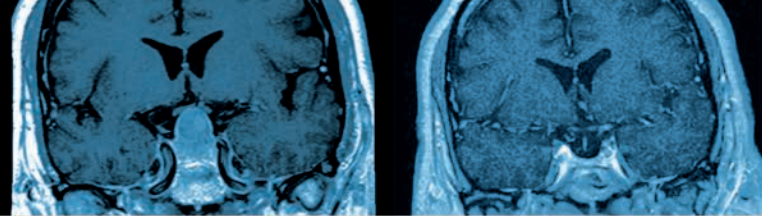
Inn at Penn Hotel & Conference Center
215-222-0200 – www.theinnatpenn.com

Sheraton Philadelphia Center City Hotel
215-448-2000 – www.starwoodhotels.com/sheraton

Homewood Suites by Hilton
215-382-1111 – www.HomewoodUnivCity.com

Services for the Disabled If special arrangements are required for an individual with a disability to attend this meeting, please contact the Office of Continuing Medical Education no later than April 25, 2014 at 215-898-6400.

Nondiscrimination Statement The University of Pennsylvania values diversity and seeks talented students, faculty, and staff from diverse backgrounds. The University of Pennsylvania does not discriminate on the basis of race, sex, sexual orientation, gender identity, religion, color, national or ethnic origin, age, disability, or status as a Vietnam Era Veteran or disabled veteran in the administration of educational policies, programs or activities; admissions policies; scholarship and loan awards; athletic, or other University administered programs or employment. Questions or complaints regarding this policy should be directed to Executive Director, Office of Affirmative Action and Equal Opportunity Programs, 3600 Chestnut Street, Sansom Place East Suite 228, Philadelphia PA 19104-6106 or 215-898-6993 (Voice) or 215-898-7803 (TDD). www.upenn.edu/affirm-action.



Pituitary macro adenoma before surgery

After transsphenoidal surgery

PITUITARY UPDATE 2014

A CME/CEU-CERTIFIED COURSE

AGENDA

Friday, May 9, 2014

ADVANCES IN THE DIAGNOSIS AND TREATMENT OF PITUITARY ADENOMAS

- 7:30 – 8:00 AM Registration and Continental Breakfast
- 8:00 – 8:10 AM Welcome
Peter J. Snyder, MD
- 8:10 – 8:50 AM Hormonal Approach to the Diagnosis of a Sellar Mass: When is it a Pituitary Adenoma?
Peter J. Snyder, MD
- 8:50 – 9:20 AM Radiologic Clues to the Diagnosis of a Sellar Mass
Laurie Loevner, MD
- 9:20 – 9:50 AM Neuro-ophthalmologic Appraisal: Beyond Visual Fields
Madhura Tamhankar, MD
- 9:50 – 10:30 AM Advances in Transsphenoidal Surgery: The Advantages of Endoscopy
M. Sean Grady, MD
- 10:30 – 10:50 AM Coffee Break
- 10:50 – 11:30 AM Aggressive Surgery for Aggressive Adenomas: Surgery of the Skull Base
John Lee, MD
- 11:30 AM – 12:35 PM The Armamentarium of Radiation Therapy of Pituitary Adenomas: Proton Beam, Gamma Knife, Cyberknife, IMRT
Robert Lustig, MD
- 12:35 – 1:35 PM Lunch
- 1:35 – 2:15 PM New Medical Therapies for Acromegaly and Cushing's Disease
Julia Kharlip, MD
- 2:15 – 3:30 PM Challenging Pituitary Cases: Multidisciplinary Panel Discussion
All faculty
- 3:30 PM Evaluation and Adjourn

The course directors and faculty are from Perelman School of Medicine at the University of Pennsylvania, Philadelphia, PA

COURSE DIRECTORS

Peter J. Snyder, MD
*Professor Medicine
Department of Medicine*

M. Sean Grady, MD
*Charles Harrison Frazier Professor of Neurosurgery
Attending Neurosurgeon, The Children's Hospital of Philadelphia
Chairman Department of Neurosurgery/Neurosurgeon-in-Chief
Hospital of the University of Pennsylvania
Neurosurgeon-in-Chief
Hospital of the University of Pennsylvania*

Julia Kharlip, MD
Assistant Professor of Clinical Medicine

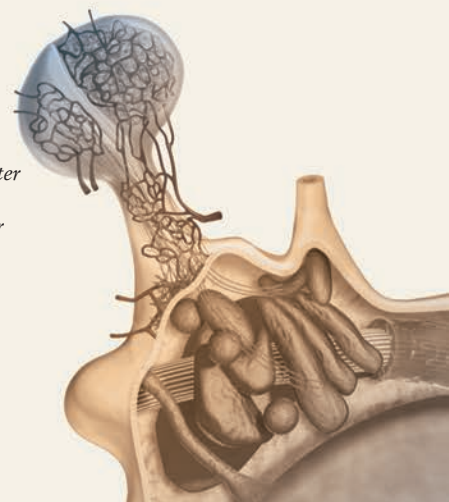
COURSE FACULTY

John Y.K. Lee, MD
*Assistant Professor of Neurosurgery
Pennsylvania Hospital
Attending Neurosurgeon
Pennsylvania Hospital and Hospital of the University of Pennsylvania
Medical Director, Penn Gamma Knife at Pennsylvania Hospital*

Laurie Loevner, MD
*Professor of Radiology, Otorhinolaryngology,
Head & Neck Surgery, and Neurosurgery
Director, Head and Neck Imaging*

Robert Lustig, MD
*Professor of Clinical Radiation Oncology
Director of Clinical Operations
Department of Radiation Oncology*

Madhura Tamhankar, MD
*Assistant Professor of
Ophthalmology at the
Hospital of the
University of Pennsylvania
Attending Surgeon
Penn Presbyterian Medical Center
Attending Surgeon
Philadelphia VA Medical Center*



REGISTRATION FORM

PITUITARY UPDATE 2014

Friday, May 9, 2014

To register online for the course please visit www.penncmeonline.com and click on CME Activities

You May Also Mail or Fax Payment and Registration Information to:

Conference Coordinator, Perelman School of Medicine at the University of Pennsylvania, Office of Continuing Medical Education
333 Blockley Hall, 423 Guardian Drive, Philadelphia, PA 19104-6021
Questions? Phone: 215-898-6400 or 215-898-8005; Fax: 215-898-1888
Email: penncme@mail.med.upenn.edu

Please print or type

Name (First)

(Last)

Academic Degree

Medical Specialty

Affiliation (Hospital, Office, or Company)

Address (Affiliation or Home)

City

State

Zip

Phone

Fax

E-mail

Registration Fee (pre-payment is required to be officially registered)

- \$100.00 for Physicians and Industry Representative
 - \$75.00 for Nurses and Health Care Professionals
 - \$25.00 for Residents and Fellows
 - No Charge for Penn Medicine Employees, Faculty and Staff
- Penn Medicine ID # _____

Payment Method

Make check payable to The Trustees of the University of Pennsylvania/CME

- Visa MasterCard Discover American Express

Authorization Signature

Cardholder Name

Card #

Exp. Date

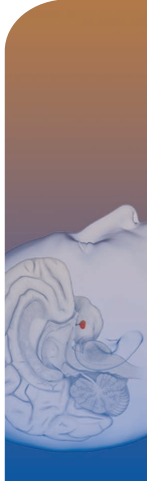
Security Code #

Please Note: Walk-in registrants must bring payment to the program.
Seating may be limited for walk-in registrants.

Continuing Medical Education



333 Blockley Hall | 423 Guardian Drive
Philadelphia, Pennsylvania 19104-6021



PITUITARY UPDATE 2014

Friday, May 9, 2014

Smilow Center for Translational Research
Perelman School of Medicine
University of Pennsylvania
3400 Civic Center Boulevard
Philadelphia, PA

Non-Profit Org.
U.S. Postage
PAID
Permit No. 2563
Phila., PA 19104