

Norditropin® FlexPro®

Quick Device Reference Guide

This is not the complete Norditropin® FlexPro® (somatropin) injection Instructions for Use. Please read the Instructions for Use at <https://www.novo-pi.com/norditropin.pdf>.



www.norditropin.com



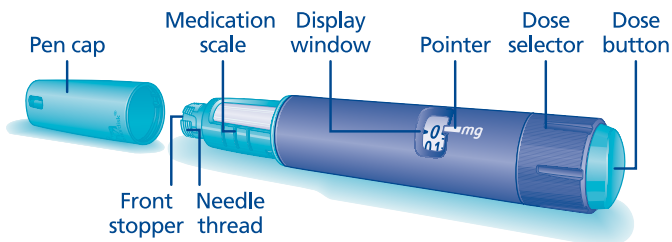
norditropin®
(somatropin) injection
5 mg, 10 mg, 15 mg, 30 mg pens

Norditropin® FlexPro®

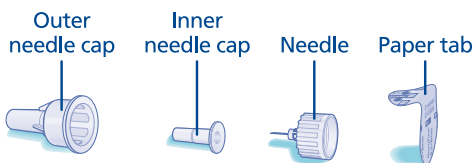
(somatropin) injection

Quick Device Reference Guide

Device Features



Needle (example)



Norditropin® is only available by prescription. For more information about Norditropin®, please visit norditropin.com.

Novo Nordisk provides patient assistance for those who qualify. Please call 1-866-310-7549 to learn more about Novo Nordisk assistance programs.

You are encouraged to report negative side effects of prescription drugs to the FDA. Visit www.fda.gov/medwatch, or call **1-800-FDA-1088 (1-800-332-1088)**.

Ask your health care provider if Norditropin® is right for you or your child.

Norditropin® and FlexPro® are registered trademarks of Novo Nordisk Health Care AG.

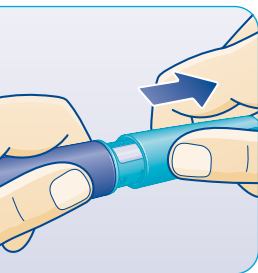
Novo Nordisk is a registered trademark of Novo Nordisk A/S.

© 2020 Novo Nordisk All rights reserved. US20NORD00078 July 2020

Step 1

Preparing the Pen

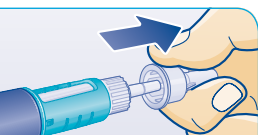
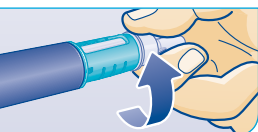
Never attach a disposable needle to your Norditropin® FlexPro® (somatropin) injection Pen until you are ready to give an injection.



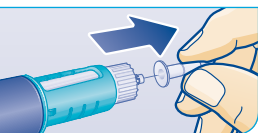
- Pull off the Pen cap. Check that the liquid in the Pen is clear and colorless. **If the liquid looks unclear or cloudy, do not use the Pen.**
- With clean, dry hands, wipe the **front stopper** on the **needle thread** with an alcohol swab.



- Tear the **paper tab** off of a new disposable needle. Screw the needle straight onto the Pen tightly. **Always use a new needle for each injection. This will help prevent contamination.**



- Pull off the **outer needle cap** and the **inner needle cap**, and throw them both away.



Step 2

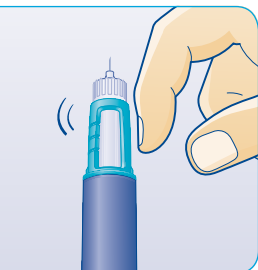
Priming the Pen

Before you inject your first dose using a new Norditropin® FlexPro® (somatropin) injection Pen, you must check the medication flow by priming the Pen.

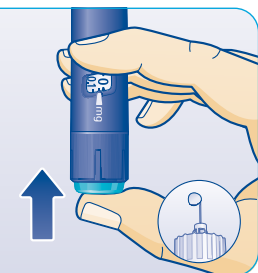


10 mg/1.5 mL Pen is shown.

- Turn the **dose selector** to the smallest amount of medicine for your Pen.
 - For the 5 mg/1.5 mL (orange) Pen, this is 0.025 mg
 - For the 10 mg/1.5 mL (blue) Pen, this is 0.05 mg
 - For the 15 mg/1.5 mL (green) Pen, this is 0.1 mg



- Hold the Pen with the **needle** pointing up. Tap the top of the Pen gently to let any air bubbles rise to the top.



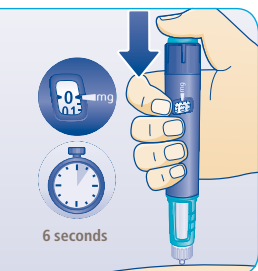
- Press the **dose button** until the "0" in the **display window** lines up with the **pointer** and a drop of liquid appears at the needle tip.
- If no drop appears, repeat the priming process up to 6 times. If no drop appears, you may **change the needle** and prime **one more time**. If a drop of liquid still does not appear, call 1-888-NOVO-444 (1-888-668-6444) for help.

Step 3

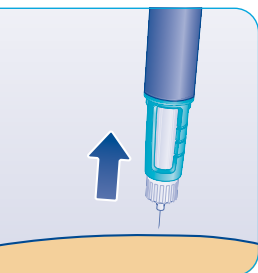
Select and Inject Your Dose



- Select the dose you need by turning the **dose selector** clockwise or counterclockwise until the right number in the **display window** lines up with the **pointer**. Do not rely on Pen clicks to select your dose.
- If there is not enough Norditropin® (somatropin) injection left in the Pen to deliver your full dose, you may deliver the amount left in the Pen. Then, inject the remainder of your dose using a new Norditropin® FlexPro® Pen, prepared as described in steps 1 and 2.



- It is generally accepted practice to use an alcohol swab to clean the injection site before injecting.
- Insert the **needle** under the skin as your health care provider has shown you.
- Press and hold the **dose button** to inject until the "0" in the **display window** lines up with the **pointer**. You may hear or feel a firm click.
- After the "0" in the **display window** lines up with the **pointer**, leave the needle under the skin **for at least 6 seconds** to make sure that you get your full dose.^a



- Carefully remove the needle from the skin. You may see a drop of liquid at the needle tip. This is normal and does not affect the dose you received.
- After injection, you must remove the needle right away. Carefully remove the needle from the Pen by turning the needle in a counterclockwise direction and throw away the needle and any empty Norditropin® FlexPro® Pen, as directed by your health care provider.
- All unused Norditropin® products must be refrigerated (36°F to 46°F) prior to first use. Do not freeze, and avoid direct light. After first injection, Norditropin® pens can either be stored outside the refrigerator (up to 77°F) for use within 3 weeks, or in the refrigerator (between 36°F to 46°F) for use within 4 weeks.

^aIf "0" does not display in the window, you did not receive the full dose. Call 1-888-NOVO-444 (1-888-668-6444) for assistance.